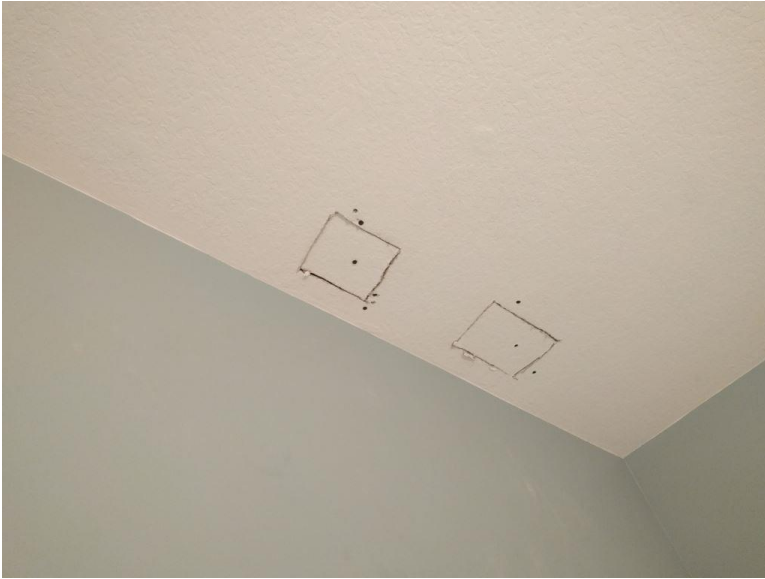
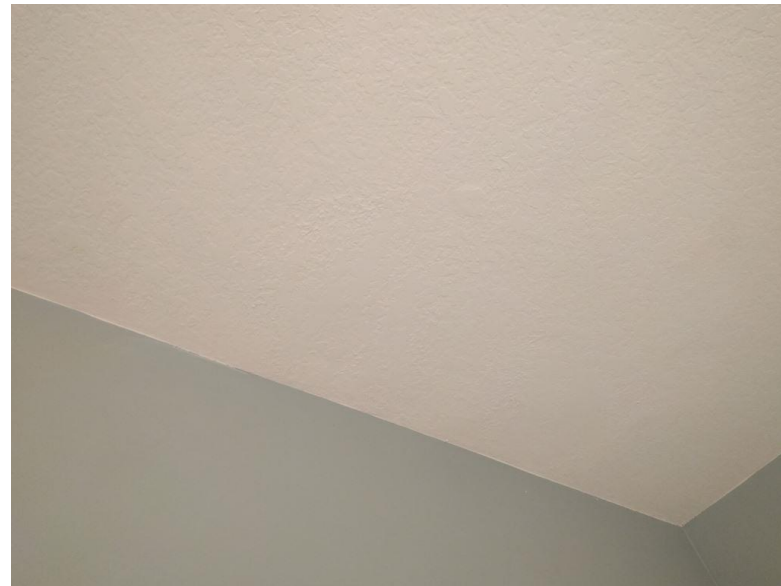


EXAMPLES OF DRYWALL REPAIRS NEEDED WHERE WIRING COULD NOT BE "FISHED" WITHOUT CUTTING FOR ACCESS

After cutting access to allow wiring to be pulled



After patching before painting



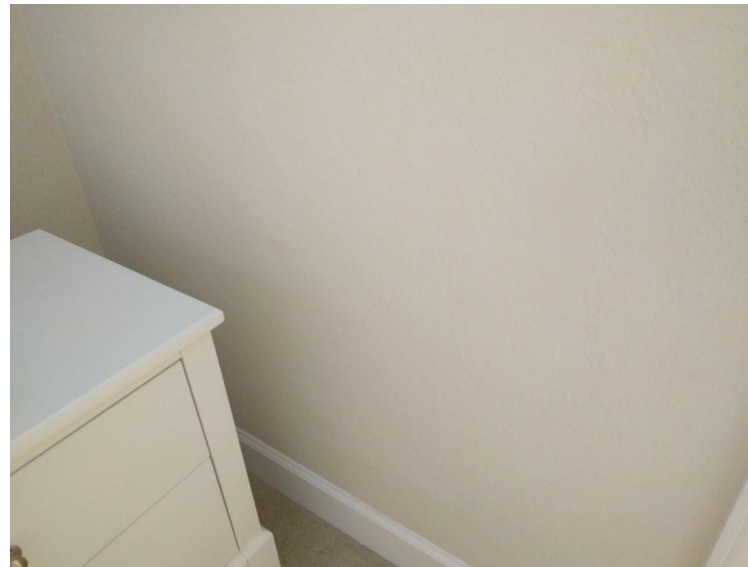
Final repair after patching & painting

EXAMPLES OF DRYWALL REPAIRS NEEDED WHERE WIRING COULD NOT BE "FISHED" WITHOUT CUTTING FOR ACCESS

After cutting access to allow wiring to be pulled



After patching before painting



Final repair after patching & painting