

# RECYCLING AT HOME AND WORK



## Reduce, Reuse, Recycle

### What to Recycle:

~ PLEASE POST THIS INFORMATION NEAR YOUR RECYCLE BIN ~

Shadow Wood Recycle and Yard Waste Day is **MONDAY**  
Place these items neatly by the curb by **6:30 am**

Please lightly rinse all containers and remove lids, caps & corks.

**GLASS:** Soda Bottles, Beer Bottles, Liquor and Wine Bottles, Jelly, Salsa and Mayo Jars, Any Other Clear, Brown, Green Glass Bottles and Jars.

**ALUMINUM:** Soda & Beer Cans, Aluminum Foil, Foil Pie Pans

**METAL:** Soup, Fruit, Vegetable, Juice and Tuna Cans, Pet Food Cans, Empty Aerosol Containers

**PLASTIC:** Plastic Containers Marked No.1 thru No. 7 Include Water Bottles, Milk Jugs, Detergent & Bleach Bottles, Soda Bottles, Shampoo Bottles, Butter or Whipped Topping Tubs

**PAPER:** Newspaper, Magazines, Brown, White, and Colored Paper Bags, Phone Books, Junk Mail, Catalogs, Office and Computer Paper, Corrugated Cardboard (such as Moving Boxes), and Cardboard (Like Cereal Boxes, Gift Boxes, Shoe Boxes, Beverage Carrying Boxes, Rice and Pasta Boxes, etc) .

*Please flatten ALL Cardboard!*

**INK CARTRIDGES:** Can either be mailed back to manufacturer or dropped off at Office Max locations

**SHARPS (Needles):** Can be dropped off at Bonita Springs Fire Stations 2, 3 and 4 on weekdays from 8 am to 5 pm. The container **MUST** be physically handed to someone. Do not drop off or leave unattended.

**LANDSCAPING DEBRIS:** Grass Clippings, Fallen Fruit, Leaves, Tree Limbs, Palm Fronds, Branches: 1x week service, unlimited quantity. Items should be no more than 6 feet in length and weigh no more than 50 pounds. Up to 50 pounds of palm fronds may be unbundled if placed neatly at the curb for collection each week. If they are bundled, the collection is unlimited. Grass clippings, leaves, or other loose waste must be bagged or containerized.

Call **337-0800** for your recycling bin.  
Plastic bags containing recyclables are **NOT** acceptable.

The Following Items Are Currently **NOT** Recyclable in Lee County:

**GLASS:** Medicine Bottles, Drinking Glasses, Dishes, Windows & Mirrors, Cookware (Pyrex, etc).

**ALUMINUM:** Pots & Pans, Cooking Utensils, Door Screens, Lawn Furniture

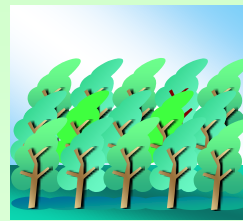
**METAL:** Tools, Car Parts, License Plates, Eating Utensils

**PLASTIC:** Plastic Grocery Bags, Pool Chemical Bottles, Motor Oil & Antifreeze Containers, Household Chemical Containers, Flower Pots, Egg Cartons, Polystyrene Trays, Newspaper Sleeves, Styrofoam

**PAPER:** No Paper Packaging with Wax Layer (eg. Juice Boxes)

### Benefits of Recycling

- Recycling of products reduces the amount of land required for landfilling waste materials - and **NO ONE** wants a landfill or incinerator in their community.
- Recycling also reduces atmospheric emissions that are generated during the incineration of waste.**



- Recycling paper and cardboard reduces the number of trees that are used each year in creating new paper products. The cutting of trees can have detrimental effects on the environment. Trees remove carbon dioxide from the

atmosphere, their roots help protect the land with erosion control, and they provide a place for birds and other animals to live.

- Once an item goes to the landfill, it is deprived of the things it needs to break down and return to the Earth. Landfill daily cover is necessary, but it blocks out sunlight and oxygen, which are needed for such items as newspapers to biodegrade. Material accumulates and the landfills continue to grow.**



- Recycling reduces the need for landfill space, reduces the use of energy for producing products, protects virgin materials, and creates jobs. Let's not forget the benefits of reducing disposal costs of materials sent to landfills and the potential revenue generated, depending upon the market.

#### **"REGULAR" TRASH**

**All garbage should be placed neatly on the curb prior to 6:30 am on your Garbage Collection Day which is Tuesday. 1x per week service, unlimited quantity; garbage cans, bags or containers must not exceed 40 gallons or 50 pounds. Cans must have a closely fitted top and two handles.**

# How to Recycle at Home and at Work:

## At Home:

### Community

Participate in curbside and drop-off programs where available



### Clothing

Recycle discarded clothing for reuse through garage sales, Goodwill, Salvation Army, or other charitable organizations



## At Work:

### Think before you toss

Use Recycling Bins  
Encourage Co-Workers

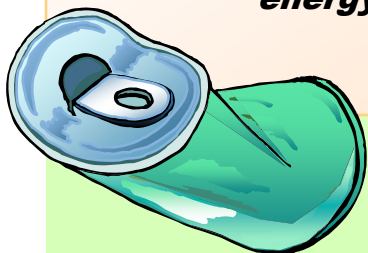


## Did you know ...?

**Paper recycling began in the United States in the 1930's.**

**Recycling of wastes in your home alone, such as newspaper, glass, and metal can reduce carbon dioxide emissions by 850 pounds a year.**

**You can make 20 cans from recycled material with the same amount of energy that it takes to make one new one – You choose!**



## MEDICATION DISPOSAL

Federal Guidelines: Do not flush prescription drugs down the toilet or drain unless the label or accompanying patient information specifically instructs you to do so. For information on drugs that should be flushed visit the FDA's website.

To dispose of prescription drugs not labeled to be flushed, you may be able to take advantage of community drug take-back programs or other programs, such as household hazardous waste collection events, that collect drugs at a central location for proper disposal.

Currently, Lee County Solid Waste does not have a drug take-back program available in your community. Lee County Solid Waste offers the following recommendations for medication disposal:

1. Take your prescription drugs out of their original containers.
2. Mix drugs with water or soda and an undesirable substance, such as cat litter or used coffee grounds. Put the mixture into a disposable container with a lid, such as an empty margarine tub, or into a sealable bag.
3. Conceal or remove any personal information, including Rx number, on the empty containers by covering it with black permanent marker or duct tape, or by scratching it off.
4. Place the sealed container with the mixture, and the empty drug containers, in the trash.

Shadow Wood Community Association, Inc. has an Environmental, Health and Safety Policy to protect the environment, which includes *“protecting and conserving natural resources by minimizing wastes, managing energy use responsibly, and employing pollution prevention principles.”*